

Datasheet

WhatsUp Gold NetFlow Monitor Features

NetFlow Home Workspace

Fully integrated with the WhatsUp Gold web management console, this workspace gives you immediate access to configuration, management, and reporting information within WhatsUp Gold NetFlow Monitor.

Mobile Access

You are able to view up to 19 NetFlow reports from your mobile phone, smartphone, or PDA.

Network Traffic Analysis

Powerful analysis tools help you understand bandwidth utilization by user, protocol, and application. In addition, you can identify heavily loaded switches, routers, or interfaces and can report on various network statistics such as top hosts, protocols, applications, and conversations.

Dedicated NetFlow Database

By using a dedicated SQL Server database, WhatsUp Gold NetFlow Monitor ensures that data collection is scalable for even the most traffic intensive network environments.

Comprehensive Reporting

Using data produced by NetFlow-enabled switches and routers; WhatsUp Gold NetFlow Monitor consolidates flow data and presents you with detailed insight into how your network is performing in real-time. NetFlow reports can be integrated with WhatsUp Gold reports to provide consolidated views of device and traffic status.

WhatsUp® Gold NetFlow Monitor

Get the Whole Picture of Your Network's Performance

WhatsUp Gold NetFlow Monitor provides in-depth insight into how your network is performing, allowing you to gather information and then analyze, and report on traffic patterns and bandwidth utilization in real time. WhatsUp Gold NetFlow Monitor not only highlights overall utilization for the LAN or WAN for a specific device or interface, it also indicates the users, applications, and protocols that are consuming valuable network bandwidth.

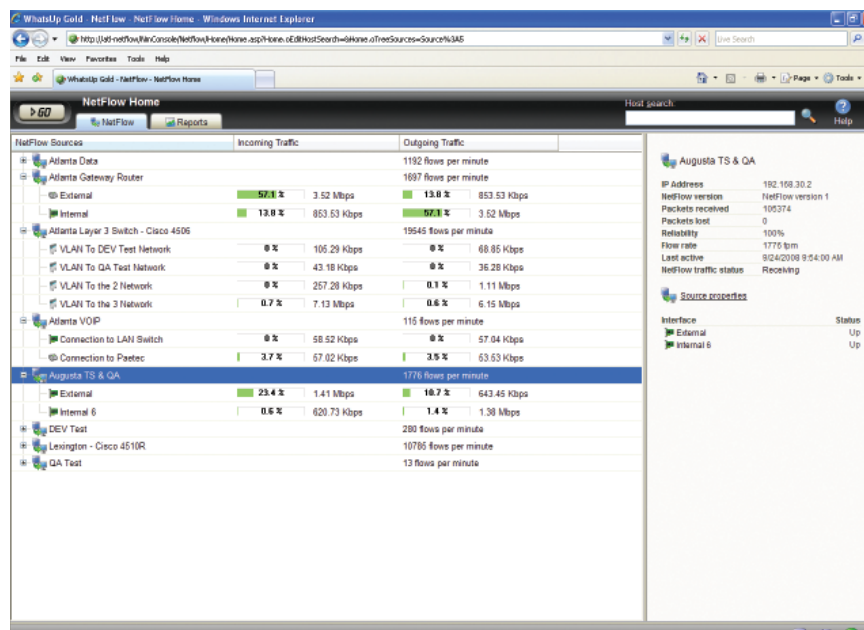
The New Reality of Network Management

Keeping your network running 24/7 isn't enough anymore. Now you also have to understand how the network is being used in order to ensure optimal performance. A slow network has adverse effects on the entire business, and without the proper tools you can't always pinpoint performance problems quickly or efficiently.

If you can't locate top talkers on your network or determine traffic destinations both within and outside of your network, how can you tell if YouTube video downloads are impacting overall performance or business-critical applications are starved for bandwidth? When there's a network performance problem, network managers need to get in, analyze the information to understand the issue, and then rapidly resolve the problem.

Better Insight Leads to Better Network Performance

With the WhatsUp Gold NetFlow Monitor, analyzing network traffic patterns and understanding how network bandwidth is utilized has never been simpler. WhatsUp Gold NetFlow Monitor provides the level of insight you need to instantly identify network problems – such as which users are affecting overall performance or which applications need more bandwidth – so you can take action to ensure the network is performing within parameters.



Instantly understand how the network is being used with summarized views of traffic and bandwidth utilization.

Address Security and Compliance Issues Before They Become a Problem

WhatsUp Gold NetFlow Monitor enhances network security by providing detailed reporting of failed connections by protocol type (TCP and UDP) and TCP port address. This information gives you real-time indications of where external attacks may have occurred – enabling you to take action before a major security breach can occur.

This solution also ensures compliance from both a legal and licensing perspective, as it detects unauthorized file-sharing or music-sharing applications that can result in legal liability. These applications also provide a mechanism for the introduction of viruses and worms into the corporate network, so their early detection and de-installation is critical.

Improve Network Insight with Real-Time Reporting

Empower your network managers to make the best decisions possible with real-time data. WhatsUp Gold NetFlow Monitor delivers powerful reporting capabilities that transform raw network traffic data into useful information on network trends, utilization, and bandwidth consumption.

Additional reports present NetFlow data in real time as well as summary data for historical trend analysis. All reports are fully configurable and can be filtered based on any definable parameters in the NetFlow workspace. Furthermore, WhatsUp Gold NetFlow Monitor reports can be fully integrated with WhatsUp Gold's extensive reporting giving you a consolidated view of not only network status, but also how the network is being utilized.

Flexible and Comprehensive Netflow Analysis

The WhatsUp Gold NetFlow Monitor plug-in integrates with all editions of WhatsUp Gold (Standard, Premium, Distributed and MSP Editions). WhatsUp Gold NetFlow Monitor is fully scalable, and depending on your network size, it offers the flexibility to install a version fully integrated with WhatsUp Gold, or as a standalone installation for enterprise networks with large amounts of measurable traffic.

WhatsUp Gold NetFlow Monitor gives you a global view of your network traffic with the relevant information you need to understand what applications and which users and protocols are consuming network bandwidth.

WhatsUp Gold NetFlow Monitor Benefits Summary

- **Understand network performance:** Instantly see what traffic is on the network and how it affects your network performance. Pinpoint and troubleshoot traffic problems while they are occurring.
- **Gain control:** Understand what parts of the network are being accessed and when to prevent misuse and enforce operational policies.
- **Track changes:** Review how traffic patterns have changed over time and understand the impact of routing, firewall, DNS, or other configuration changes.
- **Optimize business effectiveness:** Gain the real-time insight you need to understand what you can do to optimize your network to support your business objectives.
- **Increase network security:** Keep your network secure and ensure audit and legal compliance by detecting unauthorized music- and file-sharing applications as well as uncovering attacks directed at your network.

For a free 30-day trial of WhatsUp Gold NetFlow Monitor, please visit
www.whatsupgold.com/products/download

Detailed technical information is available for WhatsUp Gold NetFlow Monitor at
www.whatsupgold.com/products/netflow

System and hardware requirements are available at:
www.whatsupgold.com/products/netflow/sysreq.aspx

Copyright © 2009, Ipswitch, Inc. All rights reserved. WhatsUp is a registered trademark and Ipswitch is a trademark of Ipswitch, Inc. Other products or company names are or may be trademarks or registered trademarks and are the property of their respective holders.

10 Maguire Road
 Lexington, MA 02421
 (781) 676-5700

Kingsfordweg 151
 1043 GR Amsterdam
 The Netherlands

Ipswitch Japan 株式会社
 〒106-0047
 東京都港区南麻布4-11-22
 南麻布T&Fビル8階