



Ipswitch™ WhatsUp Gold® - Comprehensive Monitoring for both IPv4 and IPv6 Enabled Devices

One of the key features in WhatsUp Gold is its ability to discover, map and monitor as well as alert and report on IPv6 enabled devices. It also features IPv6 ready tools including Ping and Traceroute to locate and document devices with IPv6 addresses.

WhatsUp Gold polls IPv6 devices using ICMP ping, which can distinguish between address types and use either IPv6 or IPv4 packets, depending on the type of IP address that is provided.

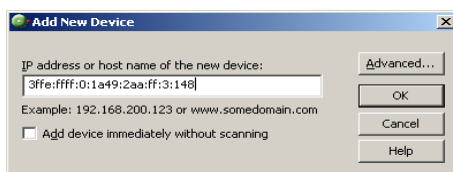
In addition, the WhatsUp Gold Web server can be configured with an IPv6 address.

Any devices requiring monitoring that are configured with IPv6 addresses can be added to your WhatsUp Gold implementation in two ways:

1. Manually adding a single device in the WhatsUp Gold Console.
2. Importing a host file from the Device Discovery Wizard.

To add a single device:

Start by selecting the Device Group to which you want to add the device. Then, from the WhatsUp Console, go to **File > New Device**

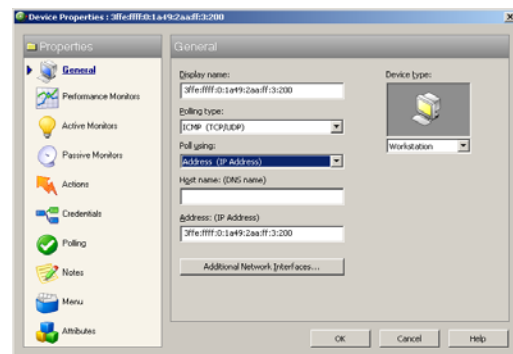


Add New Device dialog box

- Enter the host name or IPv6 address of the device you want to add.
- Click **Advanced...** to select active monitors to scan the device for.
- Click **OK** to start the discovery scan on that device.

Note: Selecting **Add device immediately without scanning** immediately adds a "bare-bones" device to your network, generically categorized as a workstation with a Ping monitor.

Then the Device Properties dialog box appears for this newly added device.



Device Properties dialog box

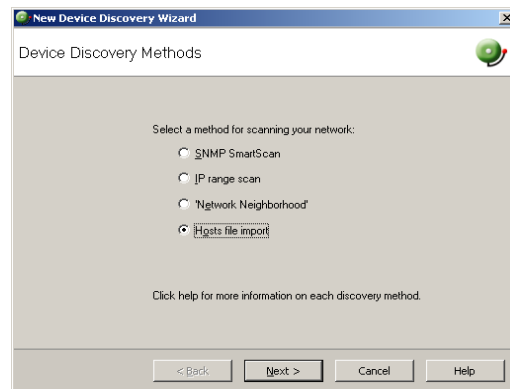
You can accept or modify the device's default properties, then click **OK**.

When you click **OK**, the new IPv6 device icon appears in the Map View and the device will start polling.



To import a host file:

From the WhatsUp Gold Management Console, go to **File > Discover Devices**.



Device Discovery Methods dialog box

