

Introducing WhatsUp Gold Enterprise Suite

Simply the most intuitive, comprehensive, and cost effective IT management solution available today

WhatsUp Gold Enterprise Suite gives you all of the enterprise-grade features that you need, proven performance in over 100,000 networks worldwide, and complete deployment ease at a fraction of the cost. Discover, map and manage your entire infrastructure—network devices, server, applications, virtual resources, VoIP, configuration settings and network traffic—from a single interface in a matter of minutes. It's that simple.

WhatsUp Gold Enterprise Suite offers an integrated, extensible and scalable architecture which means one installation, one console, one Alert Center & one integrated discovery. Monitor your IT infrastructure worldwide through one interface with a solution that deploys without any planning or preparation. Could it be any easier?

Take control of your IT infrastructure

- Manage network devices, servers, virtual resources and applications from the same console
- Discover (layer 2/3), map, document and inventory your entire infrastructure and start monitoring performance right away with a single mouse click
- Automate configuration & change management
- Understand network traffic and bandwidth usage—who and how
- Understand traffic abnormalities to secure your network
- Assure network quality for IP Telephony

WhatsUp Gold Enterprise Suite is deployed based on the number of devices: 500, 1000, 2500, or more—select the option that works best for you!

“WhatsUp’s ability to scale with our company has been impressive; we started with 22 devices under management and now use WhatsUp to monitor over 2,500 different devices all across the United States.”

—Dave Perrill, President,
 BHI Advanced Internet Inc.

WhatsConnected: Know Your Infrastructure

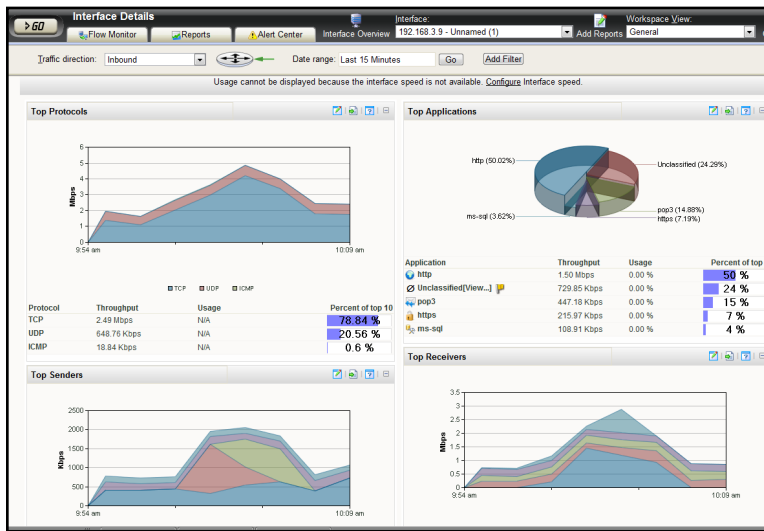
Establishing an effective management and security strategy starts with knowing where everything is, what it is, and how it's connected. You should run regular discoveries on your network to understand if any type of connectivity or other changes have occurred and if any unauthorized devices have been added. Layer 2 and 3 topology maps generated by a comprehensive discovery process directly support compliance efforts such as PCI-DSS. WhatsUp Gold Enterprise Suite presents you with a complete picture and inventory of your network and connected assets. Don't miss a thing—WhatsUp Gold Enterprise Suite has you covered.

Accurately identify, map and inventory your network devices, interdependencies, and locations.

ID	Class	Name	Description	Manufacturer	Model	Serial Number	Hardware Revision	Firmware Revision	Software Revision	Port Count
11	chassis	Switch System	Cisco Systems, Inc.'s C4510P-10 slot switch	Cisco Systems	WS-C4510E	FD00494382	V05			0
12	backplane	Backplane	WS-C4510E 10 slot switch backplane	Cisco Systems						0
13	sensor	Chassis Temperature Sensor		Cisco Systems						0
15	fan	Fan	Fan Tray	Cisco Systems	WS-X5902	HW00027048C				0
18	powerSupply	Power Supply 1	Power Supply (AC 1420W)	Cisco Systems	PWR-C451400	DT183217136	V02			0
19	sensor	Power Supply Fan Sensor		Cisco Systems						0
21	powerSupply	Power Supply 2	Power Supply (AC 1420W)	Cisco Systems	PWR-C451400	DT1410177709	V03			0
22	sensor	Power Supply Fan Sensor		Cisco Systems						0
23	other	Clock Module	Clock Module	Cisco Systems	WS-X06-CLDCK	JAE0149K2H	V04			0
24	other	Mux Buffer 3	Mux Buffers for Redundancy Logic	Cisco Systems	WS-X4500	JAE111919V4P	V04			0
25	other	Mux Buffer 4	Mux Buffers for Redundancy Logic	Cisco Systems	WS-X4500	JAE11189E2M	V04			0
26	other	Mux Buffer 5	Mux Buffers for Redundancy Logic	Cisco Systems	WS-X4500	JAE11190M3	V04			0
27	other	Mux Buffer 6	Mux Buffers for Redundancy Logic	Cisco Systems	WS-X4500	JAE11190M3	V04			0
28	other	Mux Buffer 7	Mux Buffers for Redundancy Logic	Cisco Systems	WS-X4500	JAE11191F52	V04			0
29	other	Mux Buffer 8	Mux Buffers for Redundancy Logic	Cisco Systems	WS-X4500	JAE11190J3P	V04			0
30	other	Mux Buffer 9	Mux Buffers for Redundancy Logic	Cisco Systems	WS-X4500	JAE11190J2M	V04			0
31	other	Mux Buffer 10	Mux Buffers for Redundancy Logic	Cisco Systems	WS-X4500	JAE11030K1T	V04			0
1000	module	Linecard slot 1	Supervisor V with 2 1000baseT GBIC ports	Cisco Systems	WS-X4548-GB-	JAE118959J8	V07	12.020E1V1	12.248555	0
1001	other	Hotfix Services	Hotfix Services Card	Cisco Systems	WS-F4521	JAE12045V9B	V05			0
2000	module	Linecard slot 2	Supervisor V with 2 1000baseT GBIC ports	Cisco Systems	WS-X4548-GB-	JAE12061AMF	V09	12.020E1V1	12.248555	0
2005	other	Hotfix Services	Hotfix Services Card	Cisco Systems	WS-F4521	JAE12045V9B	V05			0
3000	module	Linecard slot 3	10/100/1000baseT RJ45 with 48 10/100/1000 base	Cisco Systems	WS-X4548-GB-	JAE111299RP	V05			0
4000	module	Linecard slot 4	10/100/1000baseT RJ45 with 48 10/100/1000 base	Cisco Systems	WS-X4548-GB-	JAE12046EU	V05			0
5000	module	Linecard slot 5	10/100/1000baseT RJ45 with 48 10/100/1000 base	Cisco Systems	WS-X4548-GB-	JAE12061AMF	V05			0
6000	module	Linecard slot 6	10/100/1000baseT RJ45 with 48 10/100/1000 base	Cisco Systems	WS-X4548-GB-	JAE12061AMF	V05			0
7000	module	Linecard slot 7	10/100baseTX RJ45 with 48 10/100 baseT ports	Cisco Systems	WS-X45148-RJ	JAE119540N4	V04			0
8000	module	Linecard slot 8	10/100baseTX RJ45 with 48 10/100 baseT ports	Cisco Systems	WS-X45148-RJ	JAE1062JFY	V04			0
9000	module	Linecard slot 9	10/100baseTX RJ45 with 48 10/100 baseT ports	Cisco Systems	WS-X45148-RJ	JAE1062JFY	V04			0

Flow Monitor: Control Traffic

Do you know what the normal behavior of your network looks like? If not, how are you going to recognize abnormal behavior? You need to establish a performance baseline over a period of time. When do normal traffic peaks and valleys occur? What types of traffic are on the network? What protocols? What are the sources and destinations of traffic? Armed with information about traffic patterns and performance, you can quickly identify traffic bottlenecks or ascertain if abnormal behavior is occurring. Tracking traffic anomalies can help you detect the introduction of viruses and worms into the corporate network, unauthorized application usage or abuse of file sharing applications, video and streaming audio. Analyze, understand and manage network traffic with WhatsUp Gold Enterprise Suite to keep your network performance at top speed.

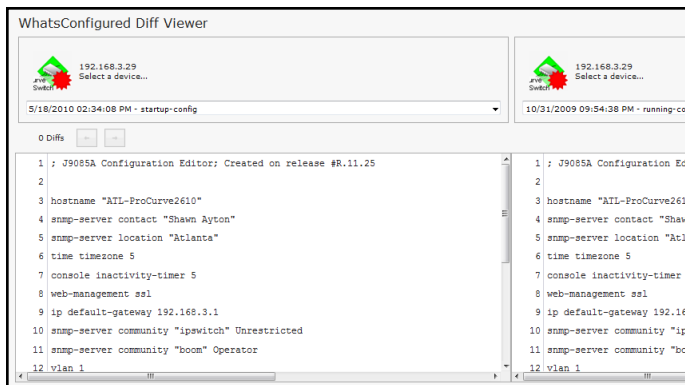


Easily analyze and manage network traffic, application traffic and bandwidth use.

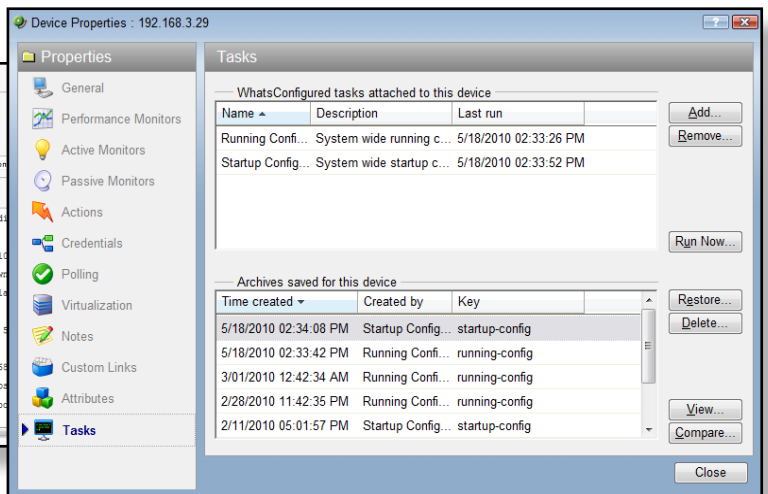
	In Bytes	In Average Speed	In Maximum Speed	Out Bytes	Out Average Speed	Out Maximum Speed	Total Bytes
Undif T1 to Placet	99.62 MB	232.12 Kbps	409.07 Kbps	105.52 MB	245.88 Kbps	433.59 Kbps	205.14 MB
Net To Port G6/12	119.01 MB	277.31 Kbps	460.16 Kbps	109.40 MB	254.92 Kbps	440.17 Kbps	228.41 MB
Internal	1.29 GB	3.07 Mbps	5.92 Mbps	611.58 MB	1.43 Mbps	2.26 Mbps	1.89 GB
Internal 3	676.67 MB	1.58 Mbps	2.45 Mbps	1.29 GB	3.07 Mbps	5.92 Mbps	1.95 GB
Net/External	1.61 GB	3.83 Mbps	6.84 Mbps	400.01 MB	932.14 Kbps	2.88 Mbps	2.01 GB
Net/Internet 6	376.56 MB	877.44 Kbps	2.30 Mbps	1.54 GB	3.68 Mbps	6.77 Mbps	1.91 GB
Net/Access	7.19 MB	16.75 Kbps	20.00 Kbps	43.34 MB	101.00 Kbps	108.04 Kbps	50.53 MB
Net/VLAN	838.63 MB	1.95 Mbps	3.13 Mbps	2.86 GB	6.83 Mbps	32.01 Mbps	3.68 GB
Net To DEV Test N6	82.69 MB	192.68 Kbps	266.03 Kbps	64.51 MB	150.32 Kbps	167.82 Kbps	147.20 MB
Net To QA Test Net	132.70 MB	309.21 Kbps	361.99 Kbps	585.95 MB	1.37 Mbps	1.88 Mbps	718.65 MB
Net To the 2 Network	1.10 GB	2.61 Mbps	27.51 Mbps	5.09 GB	12.14 Mbps	223.51 Mbps	6.19 GB
Net To the 3 Network	8.33 GB	19.87 Mbps	229.00 Mbps	1.87 GB	4.46 Mbps	29.84 Mbps	10.19 GB
Net for iSCSI Storax	357.01 KB	812.40 bps	12.47 Kbps	51.25 MB	119.43 Kbps	3.28 Mbps	51.60 MB
Net/VLAN	16.66 MB	38.83 Kbps	107.29 Kbps	11.87 MB	27.65 Kbps	96.25 Kbps	28.53 MB
Net/Guest Access	110.63 KB	250.39 bps	5.78 Kbps	990.37 KB	2.25 Kbps	45.39 Kbps	1.07 MB
Net/4510R/303	10.58 MB	24.66 Kbps	163.82 Kbps	0 Bytes	0 bps	0 bps	10.58 MB
Net/4510R/Products	21.16 GB	50.41 Mbps	300.16 Mbps	21.48 GB	51.04 Mbps	300.96 Mbps	42.65 GB
Net/4510R/SAN	2.31 MB	5.39 Kbps	35.27 Kbps	81.33 MB	189.51 Kbps	1.25 Mbps	83.64 MB
Net/4510R/SAN Ma	19.64 MB	45.77 Kbps	212.51 Kbps	19.54 MB	43.19 Kbps	209.89 Kbps	38.18 MB
Net/4510R/VOIP tra	1.25 GB	2.97 Mbps	10.12 Mbps	544.36 MB	1.20 Mbps	7.30 Mbps	2.17 GB
Net.com	199.99 MB	1.38 Mbps	2.19 Mbps	65.17 MB	151.87 Kbps	203.65 Kbps	657.68 MB
Net.com	65.17 MB	151.87 Kbps	203.65 Kbps	523.56 MB	1.22 Mbps	2.01 Mbps	588.73 MB

WhatsConfigured: Configure and Forget

Networks are built from individual devices that are configured to integrate and work together. It is essential to gather knowledge about the configuration of each device, establishing a baseline for network performance. In the event of a catastrophe, recreating the logical connectivity and security parameters is next to impossible without this vital information. Additionally, established configuration change controls allow for identifying any unauthorized changes to ACLs or other security-related configurations. Look for a network management solution that integrates configuration change control and provides an end-to-end audit trail for each change. With the WhatsUp Gold Enterprise Suite, you'll be able to automate and centrally manage your entire network's configuration from one interface, giving you more time to focus on other issues.

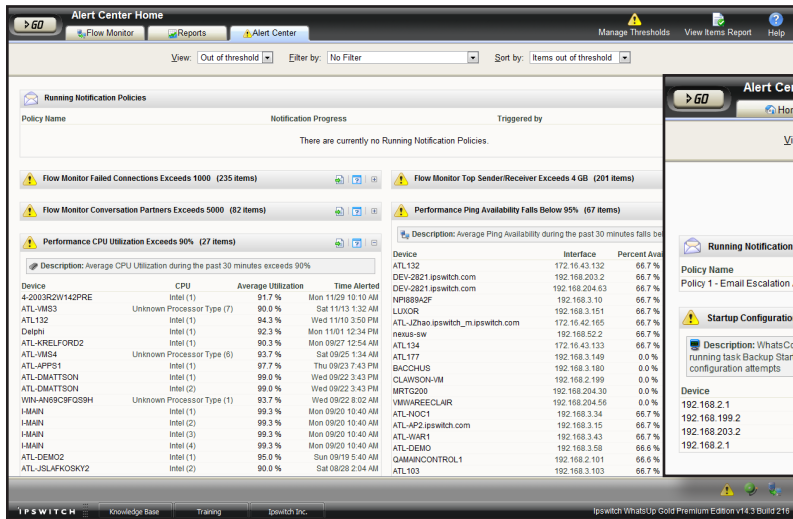


Restore, delete, compare or view configuration history for any device in your network

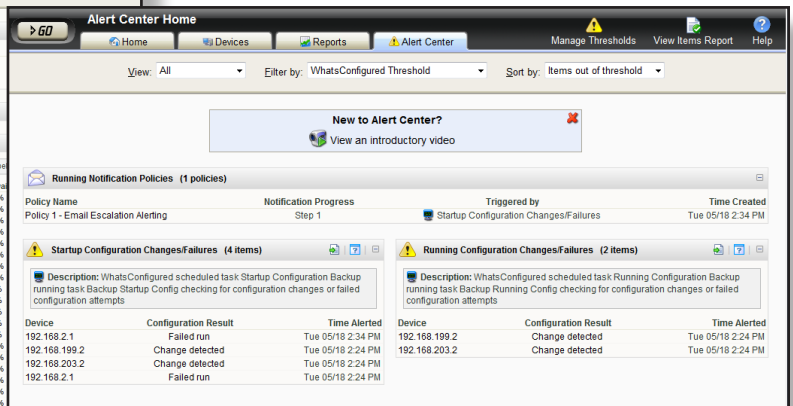


Alert Center: Stay Secured and Protected, Always

Alert Center's functionality provides a single integrated workspace that consolidates all alerts, notifications and alert acknowledgements for easy configuration and management. You can easily set up alerts on performance monitors, passive monitors, bandwidth usage violations, or configuration changes. Alert Center also offers advanced alert suppression and blackout reporting, so you can receive summaries of suppressed alerts when it fits your schedule. As part of WhatsUp Gold Enterprise Suite, Alert Center enables you to benefit from higher productivity, better collaboration and faster recovery from device downtime or system performance issues. Don't be caught off guard; WhatsUp Gold Enterprise Suite will alert you of any threats in real-time.

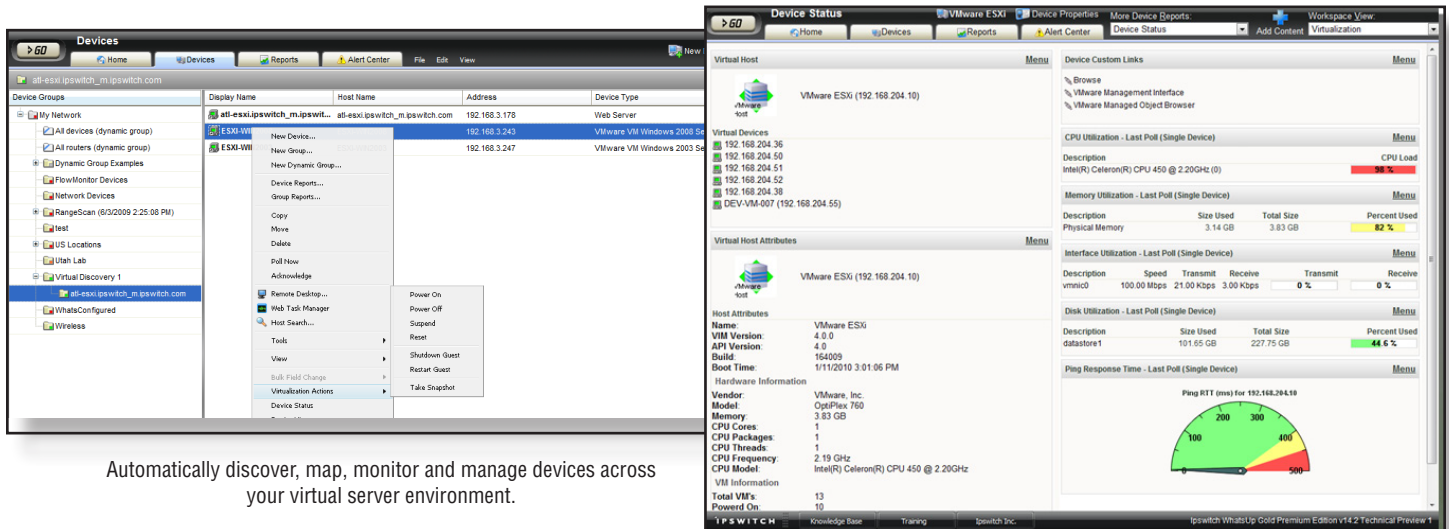


Receive real-time alerts on bandwidth usage violations.



WhatsVirtual: Map the Virtual and Physical

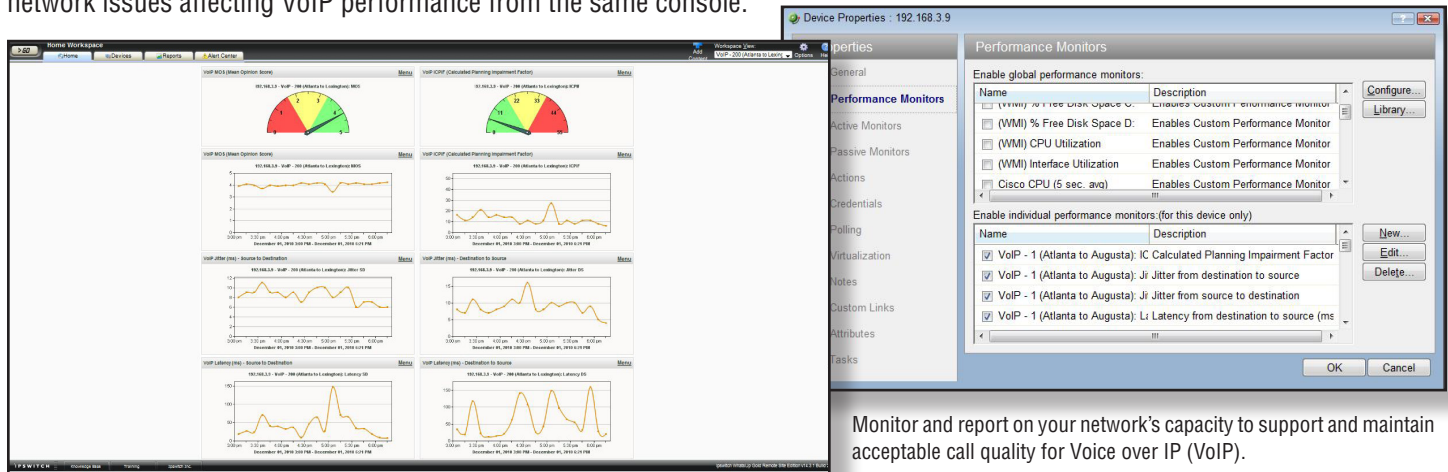
Virtualization provides you with the agility to quickly provision or reallocate server capacity whenever your business or applications so demand, but introduces a new set of complex challenges. WhatsVirtual allows you to discover, map, monitor and manage your VMware virtual server environment exactly in the same way and from the same console as your physical server infrastructure. As part of the WhatsUp Gold Enterprise Suite, WhatsVirtual enables you to have complete visibility to manage your entire datacenter environment from one management system. You don't need to look at multiple screens trying to figure out what went wrong or is likely to do so—WhatsUp Gold Enterprise Suite brings it all together in a single console. WhatsUp Gold Enterprise Suite gives you the tools to control your virtualized infrastructure and understand physical to virtual resources association at all times.



Automatically discover, map, monitor and manage devices across your virtual server environment.

VoIP Monitor: Know Your Network Quality

VoIP Monitor enables you to monitor and report on your network's capacity to support and maintain acceptable call quality for Voice over IP (VoIP). VoIP Monitor accesses information generated by Cisco IP SLA enabled devices to monitor parameters essential to VoIP performance including jitter, packet loss, latency and other calculated performance values, giving customers with combined data and voice networks 360 degree visibility, actionable intelligence and complete control for VoIP. As a part of WhatsUp Gold Enterprise Suite, you can easily view and graph metrics for bandwidth and interface utilization or troubleshoot network issues affecting VoIP performance from the same console.



Monitor and report on your network's capacity to support and maintain acceptable call quality for Voice over IP (VoIP).

WhatsUp Gold Event Log Management: The Perfect Complement

Combine WhatsUp Gold Enterprise Suite with WhatsUp Event Log Management Suite for the ultimate IT management experience. Use WhatsUp Event Log Management to reduce exposure to security breaches, malware, loss or damage, and protect your organization against costly financial penalties and legal liabilities. To ensure regulatory compliance as well as protection of key enterprise information such as customer credit card data, employee, patient or financial records, you need to know who is accessing which systems and data, and what end-users are doing at all times.

- **Keep everything you need**—automatically collect, store, archive and back up all log files
- **Stay vigilant**—monitor Windows event & Syslog data in real-time to receive alerts and notifications at the first sign of trouble
- **Examine and protect**—filter, analyze and report on Log Data to verify the success of internal security policies and demonstrate regulatory compliance; Generate custom reports for IT personnel, security and compliance officers, or law enforcement agencies
- **Find and solve**—spot check and review log files much faster to quickly respond to an emergency incident

“The most valuable benefit is keeping Nordea Bank’s corporate network up and running, and WhatsUp Gold has met all our needs and expectations. WhatsUp Gold was chosen as an easy-to-implement and easy-to-manage application, which can combine several monitoring tasks in one system.”

—Edgars Smilgzdravs, IT Network Engineer, Nordea Bank

“Using WhatsUp Gold, we went from standard, manual monitoring of our broadband network [spanning all of the US and Canada] to real-time automated monitoring of the entire network in just two weeks.”

—Mike Henderson, Broadband and Professional Services Marketing, LodgeNet Interactive Corporation

Try WhatsUp Gold Enterprise Suite for yourself, free for 30 days
http://www.whatsupgold.com/products/download/network_management.aspx