

## WhatsUp® Gold Systems Admin's Bundle

### Systems Availability and Performance Monitoring

The Systems Admin's bundle provides a complete system monitoring toolset including Application Monitoring and Virtualization Monitoring.

#### SYSTEMS ADMIN'S BUNDLE FEATURES

- › Discovery
- › Availability & Status
- › Performance Monitoring
- › Alerting
- › Reporting
- › Inventory
- › Advanced Monitoring (WMI, SSH, HTTPS)
- › Wireless Monitoring
- › Cloud Monitoring
- › Storage Monitoring
- › Virtualization Monitoring
- › Application Monitoring
- › REST API

#### Automated Discovery & Mapping

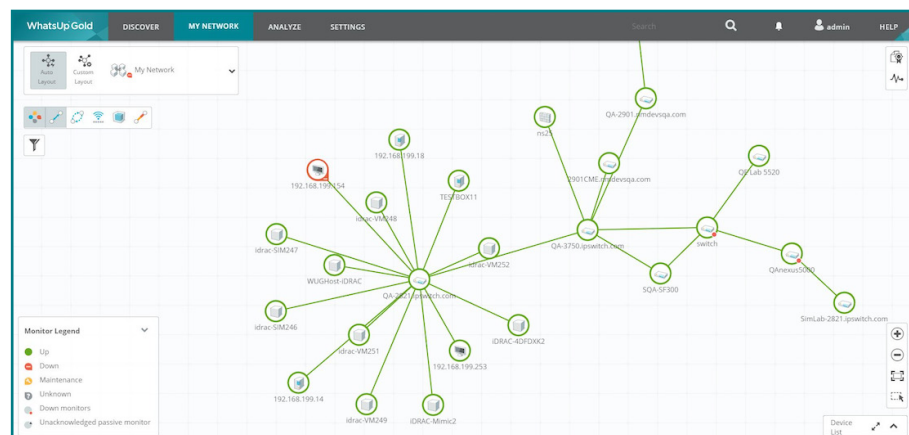
WhatsUp Gold Layer 2/3 Discovery identifies all of the devices on your network including your routers, switches, servers, access points and more and automatically generates a Layer 2/3 network map of your infrastructure, Windows® infrastructure, wireless infrastructure, cloud resources and more. It monitors wireless LAN (including the Meraki Wireless Cloud) Controllers, Access Points, servers, storage devices, printers and more. Network administrators can click on any device to instantly display its status, properties and assigned monitors, or they can drill-down to dashboards displaying detailed performance data. WhatsUp Gold can monitor anything with an IP address that can be accessed with standard monitoring protocols including ICMP, SNMP, WMI and SSH.

#### Manage & Monitor Your Cloud Resources

WhatsUp Gold automatically discovers, maps and monitors cloud environments including Amazon Web Services and Azure servers. You can monitor, report and alert on the status and performance of every metric your cloud service collects via its own native API. Not only does this allow you to track cloud resource usage, it also allows you to track cloud billing and show this report on a simple dashboard.

#### Smart Alerting & Actions

WhatsUp Gold provides real-time alerts via email, text, Slack and logging when a device or monitor changes state (e.g., from an up state to a down state) or when a performance threshold is exceeded – for example, when memory utilization exceeds 75 percent. WhatsUp Gold's "smart" alerting uses the network dependencies automatically identified in the discovery process to eliminate alert storms and quickly identify the root causes of network problems. You can create action policies for alerts including event logging, email, texting, and automated self-healing actions such as restarting an application service or any other action that can be initiated by a PowerShell script.



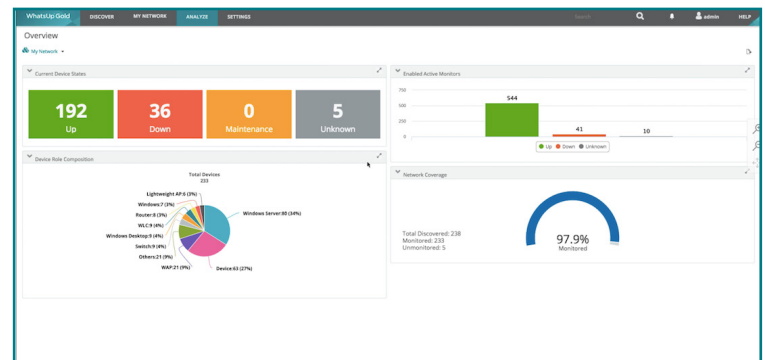
WhatsUp Gold Interactive Map

## Reporting & Inventory

WhatsUp Gold delivers an easy-to-customize reporting environment. You can select from hundreds of out-of-the-box views or easily create drag-and-drop dashboards that provide a quick assessment of overall IT health – even detailed drill-down dashboards to isolate the root causes of performance problems. These dashboards can help you quickly resolve performance problems across your organization.

Real-time Performance Monitors provide for extremely granular reporting when troubleshooting or isolating an issue. These reports can be added to any dashboard view and configured to display real time statistics for any performance monitor. With the flexibility to pause and export data these reports can significantly improve issue resolution times.

WhatsUp Gold also features integrated inventory reporting including hardware inventory, reports on installed software and updates, warranty reports, and more. These reports save both time and money and can decrease year-end IT inventory activities from weeks to minutes. The reports will also help you find under-utilized hardware resources that can be re-deployed and identify unlicensed software to avoid expensive true-up costs.



WhatsUp Gold Dashboards

## Application Monitoring

WhatsUp Gold provides turnkey Application Profiles that let you easily monitor availability performance of popular Microsoft applications such as Exchange, SharePoint®, Dynamics, Lync®, SQL Server®, DNS, Internet Information Services (IIS), Active Directory® and Hyper-V® as well as Linux systems and Apache web servers (Linux or Microsoft based). You can also easily create profiles for your in-house applications with an easy-to-use profile tool.

## Virtualization Monitoring

WhatsUp Gold discovers, maps, monitors, alerts and reports on performance for virtual hosts and guests in real-time. It keeps an up-to-date list of all virtual hosts and attributes. It monitors the performance and resource consumption of hosts and guests, including CPU, Memory, Disk and Interface Utilization. It monitors the availability and performance of virtual servers and collects event logs using both VMware and Hyper-V technologies.

## REST API

WhatsUp Gold includes a powerful REST API that makes it easy to integrate it with your own systems or scripts. An extensive suite of REST API calls let you automate your workload by extracting specific data from WhatsUp Gold or inputting information from a separate system or script. You can extract current status information for use by another system, automatically put devices into maintenance mode before making changes, add or remove devices, add monitors, and more.

For a free trial please visit: [www.ipswitch.com/forms/free-trials/whatsup-gold](http://www.ipswitch.com/forms/free-trials/whatsup-gold)