



Progress WhatsUp Gold 2022

Fast and informative network monitoring with a wealth of valuable features at a pleasing price

SCORE ★★★★★

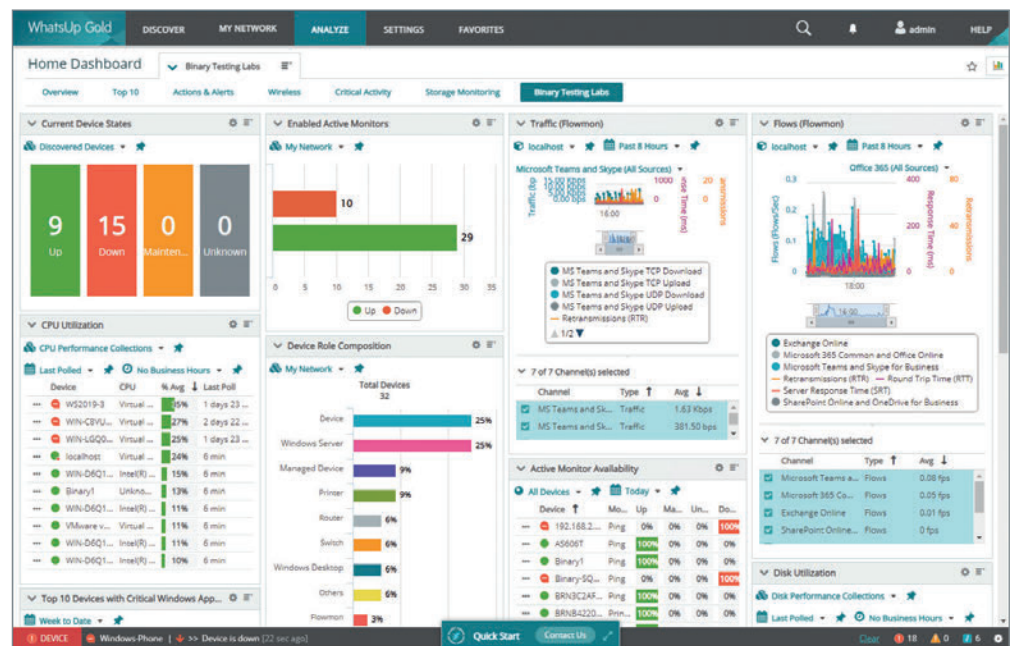
PRICE 50 devices, Premium, yearly licence, £1,309 exc VAT from whatsupgold.com

Progress Software neatly avoids any confusion over licensing, with prices for its WhatsUp Gold (WUG) 2022 Premium edition being based only on the number of monitored devices. Unlike sensor- or element-based products, you won't need to worry about the number of CPUs in a host or how many ports your switches have, and you can choose between yearly subscriptions or a perpetual licence.

WUG 2022 brings in plenty of new features. It now can send alert notifications to Microsoft Teams groups and users, access security is even tighter, the WUG dashboards offer new customisation features for greater visibility, the log management service provides regulatory compliant archiving and new reports are provided for checking device state changes over selected time periods.

Progress enhanced its product portfolio by acquiring the Loadmaster and Flowmon appliances from Kemp Technologies, and WUG 2022 can discover and monitor them. Flowmon traffic data, for example, can be fed directly into WUG 2022 and displayed in its analysis dashboards.

The Premium edition includes core features such as network discovery, interactive mapping, alerting and reporting, plus cloud, wireless network and storage monitoring. You can purchase optional modules for virtualisation



host and application monitoring, log management and network traffic analysis, with the Total Plus version including them all.

An alternative is points-based licensing, where each device, regardless of hardware components, costs one point while NetFlow data sources or monitored applications cost ten points each. The free edition will appeal to small businesses as it includes 20 perpetual monitoring points to use as they wish.

Deployment is swift, with WUG 2022 loaded on a Windows Server 2019 host and ready for its first discovery in 30 minutes. A wizard helps with this process and, after we'd added all our device credentials, it reported back in ten minutes with a complete list of all our network devices.

The WUG web console is easy to navigate, with all functions grouped under four main options in its upper menu ribbon. We could easily create custom network discoveries, pull up network topology views, swap to a network map and design custom analysis dashboards.

Deeper insights into device status are provided by the Analyze tab, with

ABOVE Dashboards now include data from Progress Flowmon appliances



“Easy to deploy, WhatsUp Gold 2022 presents an impressive set of network monitoring tools in a well-designed console”

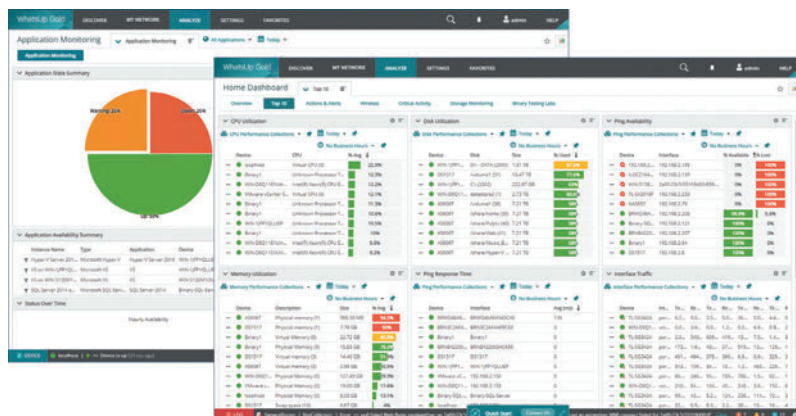
its home view displaying a real-time graphical network overview along with predefined tabs showing the top ten busiest devices, actions, critical errors and storage status. All devices are assigned coloured icons so you can quickly see their status, and it's simple to add custom dashboards by setting the number of columns and choosing which metrics to display in each one.

Alert policies link device state changes with a range of actions including running a program, restarting a service, sending emails and posting alerts. The actions menu includes a Post to Teams option, and after adding our account using the Teams Incoming Webhook connector, we customised the example JSON template to add specific details in the alert messages.

We ran the Progress Flowmon Collector appliance as a VMware VM in the lab and after adding its SNMP and REST API credentials, WUG discovered it and assigned

it a custom device icon. A new Flowmon option is provided in the Analyze tab for viewing details such as total traffic, packets, responses, flows or email, and we could add these to our custom home dashboards as real-time graphs.

Its flexible device-based licensing plans make WhatsUp Gold 2022 an affordable choice for SMBs. Easy to deploy, it presents an impressive set of network monitoring tools in a well-designed console, and tight integration with the LoadMaster and Flowmon appliances will appeal to businesses invested in these products.



LEFT The console's analysis tabs provide a wealth of data on performance

REQUIREMENTS

Windows 2016 upwards