

Datasheet

www.whatsupgold.com

WhatsUp Gold Flow Monitor Benefits

- **Determine** which users, applications or hosts are consuming your bandwidth
- **Track** and Resolve network traffic or congestion problems
- **Detect** security threats-based on abnormal network traffic behavior
- **Ensure** critical business applications get the bandwidth they need
- **Measure** bandwidth usage and ensure success of network traffic policies- NBAR & CBQoS
- **Adjust** to shifts in business demand : New applications, new organizations, more users
- **Prepare** for spikes in bandwidth usage
- **Fine-tune** network traffic priorities as: More applications are deployed/new equipment is added/priorities change

Get your free 30-day Evaluation:
<http://www.whatsupgold.com>

10 Maguire Road
 Lexington, MA 02421
 USA
 (781) 676-5700

Kingsfordweg 151
 1043 GR Amsterdam
 The Netherlands

Ipswitch Japan 株式会社
 〒106-0047
 東京都港区南麻布4-11-22
 南麻布T&Fビル8階

WhatsUp® Gold Flow Monitor

Get the Whole Picture of Your Network's Performance

WhatsUp Gold Flow Monitor provides in-depth insight into how your network is performing, allowing you to analyze, alert, and report on network and application traffic and bandwidth utilization in real-time. WhatsUp Gold Flow Monitor not only highlights the overall utilization of the LAN, WAN, specific device, or interface, it also indicates which users, applications, NBAR applications and protocols are consuming the bandwidth. Its real-time alerting capabilities will inform you of bottlenecks, network device saturation, and even virus, worms, or other external attacks as they happen, giving you the opportunity to fix issues before your end-users are impacted.

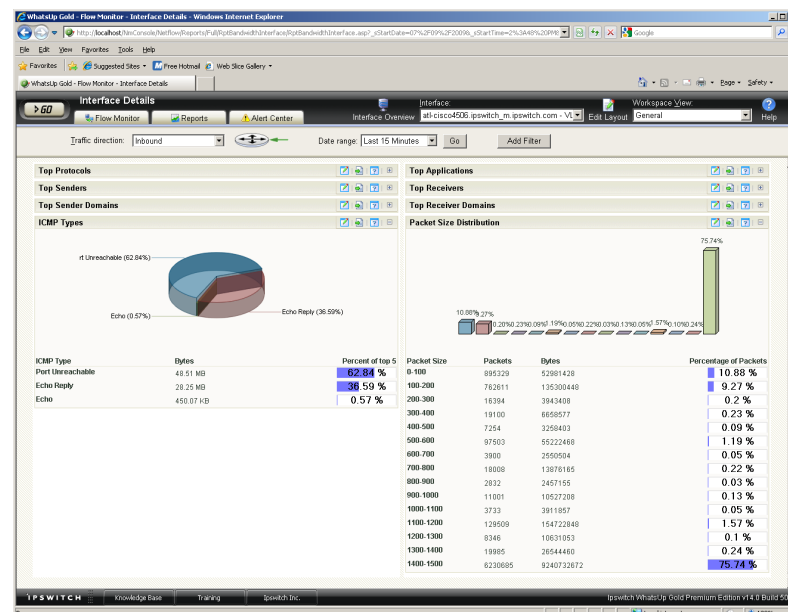
With Whatsup Gold Flow Monitor you can verify the success of your network policies, ensure Quality of Service (QoS), and quickly track and resolve traffic bottlenecks. With support for NetFlow, J-Flow, sFlow v1-2, IPFIX, Cisco ASA Firewalls (NSEL), NBAR and CBQoS. Flow Monitor is your one-stop-shop for network traffic and bandwidth monitoring and analysis. And if your network has existing non-flow enabled devices, you can use together WhatsUp Flow Publisher and WhatsUp Flow Monitor to get complete network traffic visibility anywhere in your infrastructure, without upgrading your hardware.

The New Reality of Network Management

Monitoring infrastructure performance is not enough anymore, now you also have to understand how your network is being used and by whom. If you can not locate top talkers on your network or determine traffic destinations both within and outside of your network, how can you tell if YouTube video downloads are slowing down your network or if business-critical applications are starved for bandwidth? When there is a network performance problem, network managers need to get in, analyze the information to understand the issue, and then rapidly resolve the problem.

Better Insight Leads to Better Network Performance

With WhatsUp Gold Flow Monitor, analyzing network traffic patterns and understanding how network bandwidth is utilized has never been simpler. Flow Monitor provides the level of insight you need to instantly



Instantly understand how the network is being used with summarized views of traffic and bandwidth utilization.

WhatsUp Gold Flow Monitor Features

Support for Popular Flow Formats

With support for NetFlow, J-Flow, sFlow v1-2, IPFIX, Cisco ASA Firewalls (NSEL), NBAR and CBQoS, Flow Monitor is your one-stop-shop for network traffic and bandwidth monitoring and analysis. You can even oversee network traffic across your non-flow capable devices with WhatsUp Flow Publisher—without upgrading your hardware.

Visibility into Network Bandwidth Utilization

WhatsUp Gold Flow Monitor not only highlights the overall utilization of the LAN, WAN, specific device, or interface, it also indicates which users, applications, NBAR applications and protocols are consuming the bandwidth.

Comprehensive Reporting

Flow Monitor gives you complete visibility to track real-time network usage as well as historical trends. Additionally, 95th percentile reports provide the capability to verify service providers' burstable billing records.

Threshold Based Alerting

In conjunction with the WhatsUp Gold Alert Center, Flow Monitor makes it easy to proactively troubleshoot and resolve performance bottlenecks and eliminate malicious network behavior in real-time. You can now set up multiple configurable thresholds and alerts to oversee traffic between conversation pairs, failed connections per host, top senders and receivers, and more.

identify network problems – such as which users are affecting overall performance or which applications need more bandwidth – so you can take action to ensure the network is performing within parameters.

Address Security and Compliance Issues Before They Become a Problem

WhatsUp Gold Flow Monitor enhances network security by providing detailed reporting of ICMP errors and failed connections through protocol type (TCP and UDP) and TCP port address. This information gives you real-time indications of where external attacks may have occurred – enabling you to take action before a major security breach happens.

This solution also ensures compliance from both a legal and licensing perspective, as it detects unauthorized file-sharing or music-sharing applications that can result in legal liability. These applications can provide a mechanism for the introduction of viruses and worms into the corporate network, so their early detection and de-installation is critical.

Improve Network Insight with Alerts and Reports

Empower your network managers to make the best decisions possible with real-time and historical data. WhatsUp Gold Flow Monitor delivers powerful real-time views and historical reports to transform raw network traffic data into useful information on network trends, utilization, and bandwidth consumption. In addition, you can receive real-time alerts on bandwidth usage violations for conversation pairs, failed connections per host, top senders and receivers, or specific interfaces over time, so you can identify problems right away.

And because WhatsUp Gold Flow Monitor integrates with all editions of WhatsUp Gold's -- in fact there is no need to run a separate install, since you can simply refresh you WhatsUp Gold license -- a consolidated view of health, availability and performance of network devices, applications, servers and network traffic to quickly locate, troubleshoot and resolve issues.

WhatsUp Gold Flow Monitor Benefits Summary

- **Understand network performance:** Instantly see what traffic is on the network and how it affects your network performance. Pinpoint and troubleshoot traffic problems while they are occurring.
- **Stay in the know:** Using threshold monitors, establish operational criteria and receive alerts when abnormal or specific events occur within your network.
- **Gain control:** Understand what parts of the network are being accessed and when to prevent misuse and enforce operational policies.
- **Track changes:** Review how traffic patterns have changed over time and understand the impact of routing, firewall, DNS, or other configuration changes.
- **Optimize business effectiveness:** Gain the real-time insight you need to understand what you can do to optimize your network to support your business objectives.
- **Increase network security:** Keep your network secure and ensure audit and legal compliance by detecting unauthorized music- and file-sharing applications as well as uncovering attacks directed at your network.



Detailed technical information is available for WhatsUp Gold NetFlow Monitor at www.whatsupgold.com/products/flow_monitor

System and hardware requirements are available at: www.whatsupgold.com/products/flow_monitor/sysreq.aspx