

Datasheetwww.whatsupgold.com**WhatsUp Gold WhatsVirtual Benefits**

- Saves time, effort and complexity of coordinating between and managing multiple monitoring tools
- Native integration with the VMware API ensures that the right metrics and relationships are discovered and reported
- Complete support for vMotion and High Availability live migrations, so you can maintain an accurate virtual to physical mapping at all times and simplify troubleshooting tasks
- The ability to start/stop/suspend and reset virtual infrastructure ensures that server workloads stay in tune with application demand
- Single console monitoring, alerting, reporting and management of the entire datacenter enabling faster correlation and resolution of infrastructure issues

Get your free 30-day Evaluation:
<http://www.whatsupgold.com>

10 Maguire Road
Lexington, MA 02421
USA
(781) 676-5700

Kingsfordweg 151
1043 GR Amsterdam
The Netherlands

Ipswitch Japan 株式会社
〒106-0047
東京都港区南麻布4-11-22
南麻布T&Fビル8階

WhatsUp® Gold WhatsVirtual

Complete Virtualization Management

Discover, Map, Monitor, Alert and Manage Virtual and Physical Resources through a Single Console

Virtualization reduces hardware costs and overall total cost of ownership, and it gives you a tremendous amount of flexibility to quickly provision server capacity whenever your business or applications so demand. You can even perform live migrations using VMware vMotion™, or rely on VMware High Availability to re-start or move a running virtual machine (VM) to another server in the event of hardware or operating system failure for complete failover protection.

But, apart from its multiple benefits, the dynamic nature of virtualization introduces a new set of management challenges such as how to:

- Discover and document both physical and virtualized resources
- Maintain an accurate physical to VM mapping at all times
- Reduce the risk of virtual sprawl, or the rapid proliferation of virtual servers
- Ensure that applications perform at optimal pre-virtualization levels
- Integrate alerting, escalation and response procedures across your entire infrastructure and VMware and non-VMware administrators
- Rapidly locate the true root cause of a performance problem

To address these challenges, and efficiently manage dynamic virtualized infrastructures, you need to discover, map, monitor and control your network devices, server, applications, virtual resources, network traffic and log files from a SINGLE console. After all, if you are using multiple management consoles you will have to examine multiple reports and interfaces to correlate information across hundreds of virtual machines and physical servers. And having to perform manual tracking tasks can severely hinder troubleshooting efforts and increase MTTR (mean time to resolution), making your job much more difficult and time consuming.

Integrated Monitoring and Management of Physical and Virtual Resources

WhatsVirtual allows you to discover, map, monitor and manage your VMware environment exactly in the same way and from the same console as your physical server infrastructure, applications and network devices. You don't need to look at multiple screens trying to figure out what went wrong or is likely to do so – since WhatsVirtual and WhatsUp Gold bring it all together. And because it discovers, monitors, and controls all virtual resources through VMware vCenter™ Server, the foundation of your VMware deployment, you can be assured of complete monitoring accuracy and reliability.

WhatsUp Gold WhatsVirtual Capabilities

VMware ESXi Role-based Discovery and Mapping

WhatsVirtual automatic discovers, maps and documents physical and virtual resources --virtual clusters, vCenter server, VMware ESXi host and guest (virtual) machine roles-- so you can rapidly isolate the root cause of problems anywhere in your environment.

Native Integration with the Powerful VMware API (Includes support for vCenter, VMware vMotion & VMware High Availability)

WhatsVirtual integrates with the powerful VMware API to collect performance metrics across VMs, virtual clusters and hosts, and oversee VMware vMotion or High Availability live migrations. WhatsVirtual offers all the tools that you need (real-time maps, alerting capabilities and historical reports) to understand physical to VM mapping at all times, and simplify troubleshooting tasks.

Active Management of your VMware Virtual Environment

WhatsVirtual provides powerful capability for controlling VMs and virtual clusters through various management actions that can be set for recurring execution, such as: power on, power off, suspend, reset guest or take snapshot (back up of virtual machine image)

Workspace Reports for Physical Host Servers, Virtual Machines and Virtual Clusters

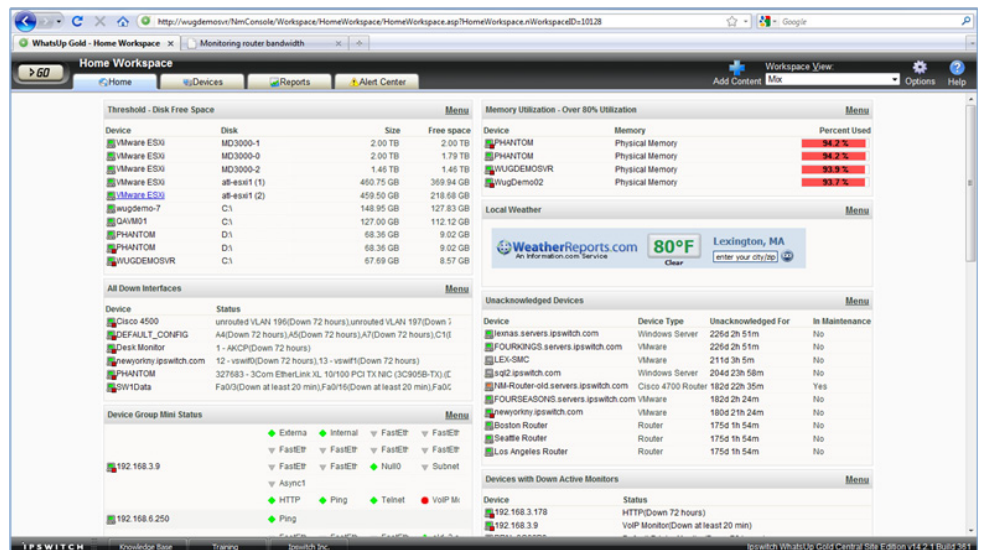
WhatsVirtual adds several new workspace reports over and above existing physical server performance monitoring reports, such as Virtual Host lists, Virtual Host attributed or virtual clusters groups, providing exactly the same information as WhatsUp Gold does for a physical server.

Seamless Integration into the WhatsUp Gold Alert Center

The WhatsUp Gold Alert Center seamlessly supports alerting, escalation, and response configuration for VMware ESXi hosts, virtual machines, virtual clusters, and vMotion or High Availability migrations -- just as it does for physical servers. Since the WhatsUp Gold Alert Center consolidates alert information across networks, servers, virtual resources, application and traffic metrics, you can use a single console to manage your entire infrastructure.

With WhatsUp Gold WhatsVirtual you can:

- Automatically discover and map VMware ESXi hosts and their associated guest systems
- Monitor health, availability and performance of VMware vCenter Servers
- View virtual server performance seamlessly along with information from your physical servers
- Track live VM migrations in real-time, and understand virtual to physical relations at all times
- Get alerted in real-time when utilization on host systems, virtual machines or virtual clusters breach thresholds
- Actively manage virtual machines on demand or on a scheduled basis using VMware tools
- Manage your entire datacenter infrastructure and applications from a single console



Single Point of Control across your virtual and physical resources

Detailed technical information is available for WhatsUp Gold WhatsVirtual at <http://www.whatsupgold.com/products/whatsup-gold-plugins/whatsvirtual>

For a free 30-day trial of WhatsUp Gold WhatsVirtual, please visit www.whatsupgold.com/products/download/

